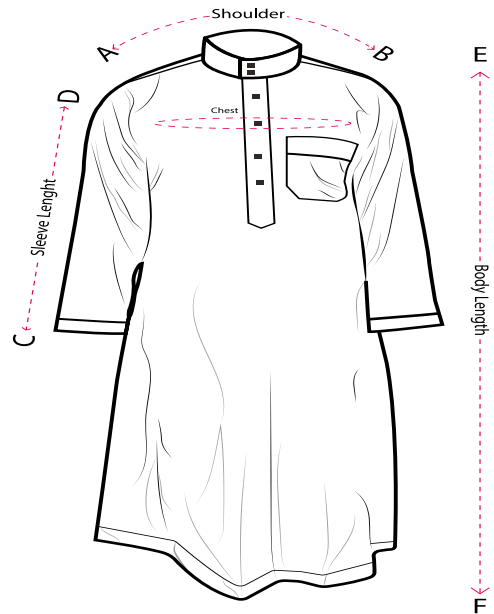


# S.Haroon Clothing

## Measurements for Thobe, Kameez, Waistcoat and Trouser

- . To ensure proper fit
- . Measure yourself just prior to placing an order
- . Fill the measurements in inches
- . Fill in all these the measurements before ordering
- . If possible, have yourself measured by a professional
- . Do not make extra allowance
- . Do not put tape too light
- . Send us Complete measurement as shown in picture given body place using your Name and Email address.



Name:

1	Around The Chest	<input type="text"/>			
2	Length	<input type="text"/>	8	Waist to Heel	<input type="text"/>
3	Around the Hip	<input type="text"/>	9	Around the Knee	<input type="text"/>
4	Sleeve Length	<input type="text"/>	10	Around Calf	<input type="text"/>
5	Around the Neck	<input type="text"/>	11	Around Ankle	<input type="text"/>
6	Around Head/Cap	<input type="text"/>	12	Your Height	<input type="text"/>
7	Shoulder Width	<input type="text"/>	13	Your Weight	<input type="text"/>
*	Collar Style	<input type="text"/>	*	Cuff/Barrel	<input type="text"/>

\* Special Instruction (Optional)

## Al-Turab

## Size Guide

Size	Length	Chest	Shoulder	Sleeves
52 S	52	21	52 S	22.5
52 M	53	22	17	23
54 S	54	21.5	17	24
54 M	54	22	17	24
54 L	54	23	18	24
54 XL	54	25	18	24
56M	56	22	17	24.5
56L	56	24	18.5	24.5
56 XL	56	26	19	25
56 XXL	56	28	19	25
58 M	58	22.5	18.5	24.5
58 L	58	24	18.5	25
58 XL	58	26	19	25
58XXL	58	28	19.5	25

